

LifeLINES

Lord of Life Lutheran Church



INSIDE THE ISSUE

A WORD FROM PASTOR JEFF ► Page 1

PRESIDENTS THOUGHTS ► Page 2

WORDS OF GRATITUDE ► Page 2

LIBRARY LINES ► Page 3

MONTHLY WHEELBARROW ► Page 4

CRP & AED INFORMATION ► Page 5

JUNE & JULY BIBLE READINGS ► Page 6

CONGREGATIONAL GIVING ► Pages 7 - 10

COUNCIL UPDATES ► Page 11

MUSIC DEPARTMENT UPDATES ► Page 12

JUNE & JULY BIRTHDAYS ► Page 13

MEMBER & GIVING UPDATES ► Page 14



Monthly Newsletter
June & July 2025

A WORD FROM PASTOR JEFF

Now Look What You've Done!

I am absolutely thrilled to announce the successful completion of our "Legacy of Love" Capital Campaign! Thanks to your incredible generosity and commitment, we have not only met our initial goal of \$1.5 million but to date, have raised almost \$1.7 million toward our objective of caring for our campus and community. Thanks be to God!



When we embarked on this journey, we knew it would require dedication and sacrifice, and you rose to the occasion with open hearts. Your pledges and contributions, big and small, have demonstrated a profound belief in our shared vision for the future of Lord of Life. Whether you contributed financially, offered your time in prayer, or spread the word with enthusiasm, your participation was vital, and it truly made a difference.

In addition to our newly renovated Ruby (Social) Hall, the funds raised will allow us to move forward with community outreach programs and ensure the long-term sustainability of our church home. I am so excited about the tangible ways these improvements will enhance our ministries and better serve our congregation and the wider community for years to come.

This campaign was more than just about raising money; it was about strengthening our bonds as a church family and reaffirming our collective mission. The spirit of unity and dedication shown throughout this process was truly inspiring. I am proud to be part of such a compassionate and committed congregation.

From the bottom of my heart, thank you. Thank you for your faith, your trust, and your unwavering support. Because of you, Lord of Life's future is brighter than ever!

Peace,

Pastor Jeff

INTRODUCING OUR NEW STAFF MEMBER



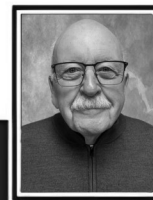
My name is Karen Ellison, and I'm excited to join the Lord of Life staff as Administrative Assistant – Finance in the Admin Office. When starting the interview process, I immediately recognized this church: Twelve years ago, I married my husband Jeff in the Chapel here at LOL!

When not at work, my hobbies include reading, jewelry-making, and drawing with traditional (non-digital) media such as graphite pencils and professional art markers. My husband and I love playing video games together, especially Animal Crossing and Pokémon GO.

I'm currently learning all the details of my new role handling financial data for the church. Previously, I spent nine years with wonderful colleagues at the Society of St. Vincent de Paul of Phoenix. In their volunteer support area, I reviewed and managed all financial reports for 80 volunteer chapters.

I'm eager to begin this new chapter in my career in this very familiar and meaningful setting.

PRESIDENT'S THOUGHTS



JERRY SOMA

If someone took a week and observed the activities at Lord of Life, they would be amazed. They would observe our competent staff always busy providing their key roles in making things run like clockwork.

In addition each day a cadre of volunteers arrives using their talents and skills. This includes providing a meaningful worship experience through music that allows us to praise our Lord. Others are planning educational programs. Still others are quilting or managing our library. Some are moving rocks and fixing things around the campus. It would take pages to list all the talents and skills that our members bring to making God's work alive here at Lord of Life.

We are fortunate that we are in the third chapter of our lives. Being retired we have the time to give in doing the things that Jesus requested of us. Each hour of the day we have members at Lord of Life giving of their time. It would be impossible to tract the hundreds of hours that are given to Lord of Life and our outreach in the community.

The time and talents we give to God's work is caring for Christ's kingdom on earth. Yes, stewardship is much more than giving of our financial resources.

Jerry Soma
Congregational Council President

A WELL DESERVED THANK YOU



Thank you to all who participated in the "VEG OUT" can vegetable collection for the month of April. Your donations totaled 926 cans of a variety of vegetables. Many, many families benefited from your kindness and the workers at the Food Bank express their appreciation to the donors every week when the food collections are delivered.

The generosity of this congregation never ceases to amaze!

Lori Jensen

Thank You

Words of Gratitude from organizations that have written to thank Lord of Life for our support over in the past two months:

- American Red Cross
- Benevilla
- California Lutheran University
- ELCA Good Gifts & World Hunger
- Feed My Starving Children
- Hospice of the Valley
- Lutheran Disaster Response
- Midtown Primary School
- Navajo Lutheran Mission
- Pacific Lutheran Seminary
- Valley View Foodbank
- West Valley Lutheran Thrift Shop

The Grand Canyon Synod and Bishop Deborah Hutterer send their warmest appreciation and thanks to the congregation and their generous support. Thank you!



A big shoutout to all the snack superheroes out there! The LOL staff is endlessly grateful for the magical deliveries of fruits, veggies, candy, cookies, cakes, nuts, and all the delicious treats in between. You feed our souls (and our snack drawers), and we love you for it! THANK YOU!

FATHER'S DAY

We are celebrating Father's Day with Root Beer Floats! Join us in the Social Hall on **Saturday, June 14 at 4 PM before service**, and on **Sunday, June 15 after service** during "Happy Hour".



PATRIOTIC ICE CREAM SOCIAL

Join us for a fun-filled Patriotic Ice Cream Social on **Saturday, July 5 from 4:00 - 4:45 PM** in the church Social Hall! Indulge in a variety of delicious ice cream treats. Bring a friend or make new friends and... let's celebrate together!



**JUNE
GRATITUDE
GIFT**

**SUN CITY WEST
COMMUNITY FUND**



'Neighbors Helping Neighbors'

**JULY
GRATITUDE
GIFT**

**THOMPSON RANCH
ELEMENTARY SCHOOL**



thank you



New Habitat For Humanity homeowner Amy K., pictured with LOL members, selected kitchen supplies provided by the generosity of the congregation.

To contribute, help or learn more about this ongoing program, please contact Sharon Maloney.



I hope you have been enjoying the library books found in Ruby Hall entry and hallway. NOW, we have HOPEFULLY finished the final piece of the library!! At the back end of the Social Hall, in the quilter's old storage room, are all the remaining books! PLEASE VISIT!!

Did you know we have a 50-volume set of all of Martin Luther's writings? You will also find Bible History, Commentaries on Old and New Testament books, Theology, World Religions, Devotionals, Music, Art, Travel, Children's books, Social Issues, AND MUCH MORE! From time to time, some books in the entry area will be moved out and exchanged for some books from our back room. This will happen mostly on the two tall thin bookcases. FINALLY, in the, back room, we are planning to create comfortable seating for reading and a small area for some research and study. (Have you ever tried carrying around Strong's Exhaustive Concordance? 5½ pounds!!)

A VERY BIG thanks to many who have helped with this large undertaking. We would be NOWHERE without Frank Petrella, Deb Dorough and my weekly helpers Robin Weeks and Linda Wainio. MANY others have pitched in when needed and I hope you all will take time to stop in. We are ALWAYS looking for additional weekly helpers to maintain our library. Straightening shelves, checking in and shelving books, dusting, and preparing 'new' books for the shelves are a few of our needs. If you'd like to join our team on a weekly or bi-weekly basis, please call the office or Barbara Chase. Until then...

HAPPY READING!!

WEST VALLEY LUTHERAN THRIFT SHOP

10615 W Peoria Ave.
Sun City, AZ 85351
623-815-7061

It's almost that time again . . . when there's a chill in the air and everything smells like pine trees! Well, maybe the chill is coming from the A/C but it's going to be "Christmas in July" at the Lutheran Thrift Shop before you know it! It's our most popular event of the year with special deals each week of the month.

Our Holiday Shop will be all dressed up for the holidays during the whole month of July. We will have exquisite holiday ornaments, dishes, twinkling colored lights, pre-lit Christmas trees, unique Nativity sets, hand-made wreaths, and table linens. Also, every imaginable decoration in red, green, silver and gold will be decking our halls and shelves. If you still send out Christmas cards, ours are so cheap you may also be able to afford the postage to mail them!

We have everything you need for Christmas. Check out the collectable Christmas towns, yard décor, music, holiday movies and pick up a new outfit to wear to Christmas eve service while you're here. The LTS is the best place to snag the perfect "white elephant" gift for that holiday party and we always have a great selection of the most coveted item; the Ugly Christmas Sweater! Forget Amazon and deck your halls with us this year!

Don't miss "Christmas in July". **Open Monday through Saturday from 9:00 AM – 3:00 PM for your shopping pleasure.** Come by and chill with us!

OPPORTUNITY NOW

The West Valley Lutheran Thrift Shop in Sun City is a faith-based nonprofit providing affordable, gently used household items to the community. Staffed by volunteers from local Lutheran churches and managed by a small team, the shop supports over (40) non-profit organizations every year throughout the local area and around Arizona with grants totaling \$400,000 annually.

Guided by the motto "God's Work, Many Hands," the shop is currently seeking volunteers to fill three Board of Directors positions and open roles on the Grant Review Committee. The Board oversees operations, while the Grant Committee reviews funding requests.

If you're interested in serving, contact Pastor Pam or Dean Lewellen for board opportunities and Toni Spencer can provide you with additional information about the Grant Committee. Your service can bring meaningful rewards through helping others.

NADABURG SCHOOL SUPPLIES NEEDED



The Nadaburg Unified School District #81 is a K-12 school district in the town of Wittman, AZ. It operates two elementary schools: Nadaburg Elementary (the historical school in the town) as well as Desert Oasis Elementary in the Surprise city limits; eight miles from LOL. Nadaburg also operates Mountainside High School. Lord of Life has a long history of providing volunteers who tutor students and gather school supplies for the classroom teachers to aid in their teaching.

More than 75% of the students in this district receive free or reduced lunches daily, which is an indication of the poverty level in the district. If you have any questions and/or would like to volunteer in this elementary school district, please contact Jack Sellers via the church directory or call the church office for his contact information.

Jack Sellers

THE WHEELBARROW RETURNS FOR THE MONTH OF JUNE



June is a month filled with opportunities for celebrations. There are birthdays, anniversaries, graduations and weddings to name a few. For the entire month of June we are going to "**MIX IT UP**" a bit because:

EVERYONE DESERVES A SWEET TREAT!

The wheelbarrow will be collecting a variety of mixes. Please bring your donations of mixes for cake, frosting, lemon bars, brownies or any other sweet treat. Your continued donations will bring a treat to many families and there is nothing sweeter than that!

For any other grocery items that you wish to donate this summer, please place them in the shopping cart (in the corner of the narthex). Thanking you in advance for your generosity and thanks to Gene and Linda Robertson who bring these items to the Valley View Food Bank every week!

CPR AND AED: BE READY TO SAVE A LIFE

Dear Lord of Life Community,

I hope this message finds you well. As your Parish Nurse, I wanted to share vital information about CPR (cardiopulmonary resuscitation) and AED (automated external defibrillator) and how these life-saving techniques can make a significant difference in emergency situations.

I understand that you may have concerns about performing CPR or using an AED due to fear of causing harm or lack of experience. Rest assured, CPR can be performed effectively with proper guidance, and AEDs are designed to guide users through the process. To make it easier for you, I have placed Lord of Life's address to each AED unit. This will come in handy when you call 911, as they will ask for your address.

Additionally, I have placed a copy of several first aid guides on a single sheet inside each AED unit. This handy reference covers various topics, including how to perform CPR, handle choking, bleeding, burns, fractures, and more.

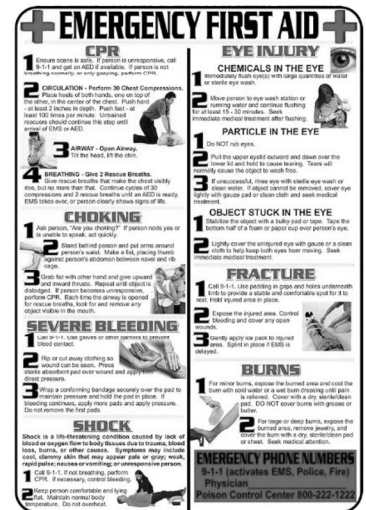
Please take a moment to familiarize yourself with the location of our AED units at the sanctuary and social hall, so you know where to find them during an emergency. We also have a third in the main office in case we need to help.

I encourage you to ask any questions or discuss any concerns you may have regarding CPR and AED usage. I am here to provide reassurance and support throughout the learning process. Remember, being informed and prepared can empower you and boost your confidence in handling emergencies.

Thank you for your attention and commitment to keeping our community safe and healthy.

Sincerely,

Parish Nurse Leoma



GRACIOUS GREETINGS LORD OF LIFERS!

If you didn't see the Thompson Ranch "Folklorio Dancers" you missed a treat.

I have to share a wonderful story from the event. At the end of the performance I was asked if we could put out a Gratitude Gift basket. After all was said and done, \$395 was given. When the monies were given to the dancers, the teacher began to cry. She said, *"We are so in need of shoes for these kids that I went before God and asked for a miracle. This church, through God's hands, have provided the miracle. Thank you, thank you."* We stood together and wept.

Lord of Life congregation, never doubt the power of the Word, Love, and Heart. As school winds down, keep the kids and parents in your thoughts.

Blessings from Christ our Savior and Lord.

Leslie Young



LOL EXERCISE SCHEDULE



MOVE AND GROOVE

TUESDAY: 9:00 - 9:30 AM
WEDNESDAY: 10:30 - 11:30 AM
THURSDAY: 9:00 - 9:45 AM

CARDIO DRUMMING

THURSDAY: 10:00 - 11:00 AM
SATURDAY: 10:00 - 11:00 AM



JUNE BIBLE READINGS

JUNE 1

Acts 16:16-34
Revelation 22: 12-14, 16-17, 20-21
John 17:20-26

JUNE 8

Acts 2:1-21
Romans 8:14-17
John 14:8-17

JUNE 15

Proverbs 8:1-4, 22-31
Romans 5:1-5
John 16:12-15

JUNE 22

Isaiah 65:1-9
Galatians 3:23-29
Luke 8:26-39

JUNE 29

1 Kings 19:15-16, 19-21
Galatians 5:1, 13-25
Luke 9:51-62

JULY BIBLE READINGS

JULY 6

Isaiah 66:10-14
Galatians 6: 7-16
Luke 10:1-11, 16-20

JULY 13

Deuteronomy 30:9-14
Colossians 1:1-14
Luke 10:25-37

JULY 20

Genesis 18:1-10a
Colossians 1:15-28
Luke 10:38-42

JULY 27

Genesis 18:20-32
Colossians 2:6-15
Luke 11:1-13

Save the Date

JUNE & JULY SOS SOCIALS

4:00 PM - 6:00 PM in the Social Hall

Sunday, June 29

Sunday, July 27

THRIVENT OFFERS NEW PROGRAM FOR MEMBERS TO APPLY FOR

Thrivent has a new generosity option for Thrivent members called **"Thrivent Cause Kits."** A member can request and complete a kit...then return it to Thrivent for placement. You may be able to do a second kit depending on availability.

Each **Thrivent Cause Kit** provides a unique opportunity to improve the lives of others, including:

WATER FILTER BUILD - This kit will support people who lack access to clean water by building three filters, each providing clean water to 122 people for 10 years.

SOLAR LIGHT BUILD - This kit will support children living in energy poverty by building three solar lights, each providing 7,300 extra study hours over 3 years.

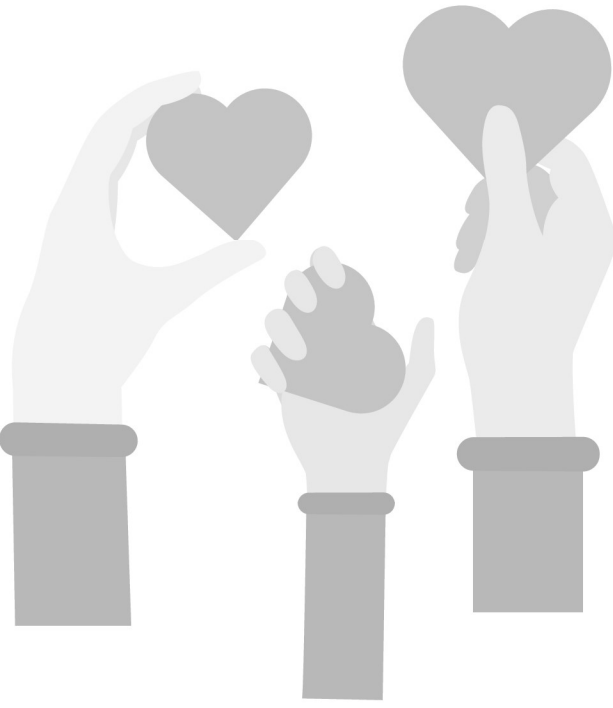
Members can obtain a kit by logging into their Thrivent account or calling Thrivent's 800 number to place an order. For further information check the website or call Thrivent.

There are more than one hundred Thrivent Members at Lord of Life, and each year support activities including the Feed My Starving Children Pack, our Giving Tree Program, the quilting program, support programs for Thompson Ranch, Nadaburg and Desert Oasis elementary schools and many other worthwhile organizations through the Thrivent "Action Team" program. Many thousands of dollars are also provided to LOL through the Thrivent "Choice Dollar" program annually.

As a fellow volunteer and Thrivent member I want to thank you for your support of LOL and the many charities and programs we support.

NOTE: My wife Karen and I will be building a Solar Light Build and look forward to sharing our experience when it arrives and is assembled.

Glenn Austad



WHAT IT MEANS TO BE A GIVING CONGREGATION



D
E
S
I
G
N
A
T
E
D

The congregation of Lord of Life Lutheran Church is a Giving Congregation and exemplifies what it means to be generous. You share your time, talents and treasures in so many different ways. We invite you to learn a little bit more about the many ways your gifts provide for vital outreach and ministry projects.

Legacy of Love is a special campaign beginning in January 2023 and running through May 2025. The donations received were asked to be above and beyond normal giving. These funds are designated for three specific areas of ministry and are not used for operational expenses. After the campaign expenses, each area will be granted 1/3 of the donations from the campaign. Any donations received in excess of \$500,000 for each area will be directed to the Facilities Renewal Fund. This campaign and the division of funds were approved by the congregation in the January 2023 Congregational Meeting. The projects completed to date in each area are:

Campus Refresh

- New Corner Sign
- Courtyard Remodel
- Social Hall Building Remodel
- A/V Upgrades to Social Hall

West Valley Ministry Initiative

- Exploration Evaluation

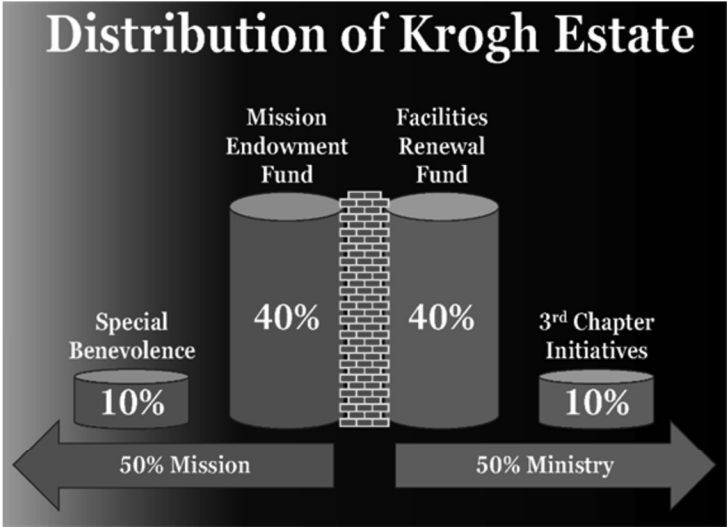
Facilities Renewal

- Roof for Social Hall Building
- Roof for Sanctuary Building
- Roof for Chapel & Classroom Building
- Roof for Administration Building
- Chapel Revision of HVAC and Ducting

Special Bequest & Estate Gifts are received by the church periodically from congregation members as part of their will or estate planning. Over the years, we have received many gifts ranging from \$1,000 to \$2.2 million dollars. Per the Lord of Life Lutheran Church constitution, gifts in amounts under 5% of the annual income budget can be allocated by Congregational Council action. Any undesignated gifts above this amount must be voted on by the congregation. Gifts that are designated by the congregation member, are immediately allocated to the designated area, and the congregation does not vote on the usage of this money.

D
E
S
I
G
N
A
T
E
D

Our most recent large estate gift was received from the estate of Jane Krogh. This gift totaled an amazing \$2,279,832.46. By vote of the congregation in the January 2023 annual meeting, these funds were allocated to four areas of mission and ministry. It was determined that 50% would be used “outside the walls” of the church in the form of direct benevolence and 50% would be used for special projects and ministries “inside the walls” of the church. **The congregation determined that none of this money was to be kept for operational expenses.**



The Maintenance Reserve is a fund used for maintenance and replacement of existing systems and equipment. As the campus ages, we must be prepared to maintain the facilities to the high standards we all set for our church. This fund is used to replace existing equipment that is in use on campus such as HVAC units, water heaters, refrigerators, freezers, dishwashers, and ovens. Most of these funds come from special donations or allocations, however, a small monthly transfer from the operating budget is made to keep this fund healthy.

The Special Benevolence Fund was born out of the Krogh Estate gift. Approved by the congregation at the annual meeting in January 2023, these funds are for the sole purpose of supporting new and innovative ministries from ministries around the globe. The Benevolence Committee has put in place stringent evaluation criteria to evaluate the grant requests and continue to work toward distributing 100% of this special gift. The Benevolence Committee brings recommended grants to the Congregational Council for final approval. To date the Benevolence Committee has recommended distributions of \$132,500 to the following eight organizations:

- | | |
|--|------------------------------|
| Faith Evangelical Lutheran Church | Mosaic |
| Foster AZ | Camp Aloma |
| LSS of the Southwest | Grace Lutheran Church |
| Mission Africa | Inside Out Network |

Gratitude Gifts are monthly donations designated to organizations recommended by the Benevolence Committee and approved by the Congregational Council. Each month a special mission project or projects are highlighted to receive this special benevolence offering. These gifts are designated by the congregation and do not come from the general operating budget.

The Facilities Renewal Fund was initially set up by the Legacy of Love campaign for renovation and renewal of our campus. This fund was granted additional funds of 40% of the “inside the walls” distribution from the Krogh Estate. These funds are designated by the congregation and do not come from the general operating budget. Any projects exceeding 5% of the annual income budget will be approved by congregational vote. Recent projects funded are:

- | | | |
|-----------------------|------------------------------|-----------------------|
| Security Glass | Campus Locking System | Equipment Shed |
|-----------------------|------------------------------|-----------------------|

Other Mission Gifts are donations that are received that are directed to mission efforts that do not fall into the categories above. These gifts are designated by the congregation and do not come from the general operating budget.

Ministry Gifts are designated gifts for specific ministry purposes or given through memorials. These gifts can be used to support or enhance any of the many ministries of the church such as the music program, technology, fellowship events, quilters, etc. These gifts are designated by the congregation and do not come from the general operating budget.

Women's Ministry/WELCA provides for special programming, support for the synodical and churchwide WELCA organizations as well as their community fund programs. These gifts are designated by the congregation and do not come from the general operating budget.

The Mission Endowment Fund is a special opportunity for mission benevolence through of Lord of Life Lutheran Church. These funds come from special donations, congregational contributions or estates specifically directed to the Mission Endowment Fund. These gifts are invested through the ELCA Foundation. Per the constitution and accompanying bylaws, these funds are provided for mission work beyond the operational budget of the church. The amount available for distribution each year is equal to 10% of the 5-year average of the year-end balances. If the balance of this fund drops below \$500,000, the available distribution becomes 5%. 2025 Distributions include:

Benevilla**Rainbow Acres****Thrive AZ**

General Operating Income is the regular donations gifted to the church as part of the ongoing support of the mission and ministries of the church. These can include envelope offerings, plate offerings, 3rd party distributions, Qualified Charitable Contributions, Thrivent Choice Dollars, etc. These donations **DO NOT** support the large projects indicated above. These contributions provide for the following:

Advertising
Accounting/Audit
Altar Supplies
AV Tech Support
Budget Benevolence
Campus Cleaning
Columbarium Upkeep
Giving Envelopes
Copiers/Printing
Devotional Materials
Education Materials

Exercise Classes
Fellowship Hour
Fire Alarm Monitoring
General Building Repairs
Musical Instrument Upkeep
Insurance
Internet Service
Janitorial Supplies
Landscape Services
Maintenance Reserve
Ministry Activities

Music Programs
Office Supplies
Phones
Postage
Restroom Supplies
Software & IT Services
Sound Equipment Repair
Staff Salaries & Benefits
Trash/Recycling
Utilities
Worship Supplies

Budgeted Benevolences are monthly benevolences recommended to the Congregational Council by the Benevolence Committee for inclusion in the annual budget. These gifts are given by the congregation from the general operating donations. The congregation approves these gifts as part of the annual budget presented at the annual meeting each January. 2025 Budgeted Benevolences include:

Benevilla
CA Lutheran University
Campus Ministry
Churchwide/Synod Support
ELCA Fund for Leaders

Friends of SJF (Haiti)
Global Missionary Support
Grace Lutheran (Homeless)
Lutheran Social Ministry SW

Native American Urban Ministry
Pacific Lutheran Theological Seminary
Pan De Vida
Valley View Food Bank



LORD OF LIFE CONGREGATIONAL GIVING

Lord of Life members contribute generously to the benevolence activities beyond our wall with their time, talents, and contributions.

In 2024 Lord of Life gave thousands of hours of service and \$484,956 in monetary donations to outside organizations.

Gratitude Gifts

January	Feed My Starving Children	\$53,561
February	LSS Refugee Integration	\$6,083
March	ELCA World Hunger	\$4,933
April	Navajo Mission - NELM	\$7,790
May	Grace Lutheran Homeless Program	\$6,151
June	Sun City West Community Fund	\$5,233
July	Thompson Ranch	\$4,980
August	Nadaburg Desert Oasis	\$5,298
September (Split)	Friends of SJF (Haiti)	\$5,162
September (Split)	Barbell Saves	\$2,344
October	Valley View Food Bank	\$6,496
November	Christmas Giving Tree	\$11,863
December	ELCA Good Gifts	\$6,788

\$126,682

WM/WELCA Benevolence

WELCA Grand Canyon Synod (Love Offering)	\$250
WELCA Grand Canyon Synod (Circle Contribution)	\$699
WELCA Churchwide (Thankoffering)	\$517
Valley View Food Bank (Thankoffering)	\$691
Valley View Food Bank (Community Fund Offering)	\$364

\$2,521

Other Mission Benevolence

ELCA Disaster Relief	\$4,590
Grand Canyon Synod Ministries	\$2,400
Pacific Lutheran Theological Seminary	\$44,920
Salvation Army	\$300

\$52,210

Annual Operating Budget

Grand Canyon Synod	\$133,320
Global Mission Support	\$10,008
California Lutheran University	\$4,008
Campus Ministry	\$7,008
Lutheran Social Ministries SW	\$10,008
Pacific Lutheran Theological Seminary	\$5,004
Spirit of the Desert Retreat Center	\$3,000
Native American Urban Ministry (NAUM)	\$5,004
ELCA Fund for Leaders	\$1,008
Pan de Vida Lutheran Church	\$6,000
Grace Lutheran Homeless Program	\$6,000
Benevilla	\$3,000
Eve's Place	\$2,004
Valley View Food Bank	\$5,004
Friends of SJF (Haiti)	\$2,004
Retired Pastor's Retreat	\$1,008

\$203,388

Mission Endowment Fund

Benevilla	\$7,000
Lutheran Social Services	\$16,200
West Valley Young Adult Ministry	\$8,000
Pacific Lutheran Seminary	\$51,000
Thrive AZ	\$10,000
Community Fund of Sun City West	\$1,000
Valley View Food Bank	\$6,955

\$100,155

ONCE UPON A TIME.....

Once upon a time, in a small and tight-knit community, there was a church that stood as a beacon of hope and love. The people who gathered within its walls had hearts as vast and warm as the sun, and it was this collective heartbeat that kept the church alive.



Each month, the church's newsletter would arrive, some with stories that were both touching and inspiring. These tales were about people who went the extra mile to help their neighbors, who lent a listening ear to those in need, and who gave generously without expecting anything in return.

One such story was about an elderly couple, Mr. and Mrs., who had been part of the congregation for as long as anyone could remember. They were always first to arrive and last to leave, sharing words of wisdom with the new members and offering comforting hugs to those who needed them.

In one instance, they noticed a new member struggling to make ends meet. Without hesitation, Mr. and Mrs. rallied the church members to gather food, clothing, and other essentials. Together, they provided the family with the support they needed to get back on their feet.

As these stories made their way into the church's newsletter, the heart of the community grew stronger. It became a source of encouragement, reminding everyone that kindness, compassion, and love were the true foundations of their faith.

And so, Lord of Life, also continued to share these heartwarming stories, inspiring others to reach out and make a difference in the lives of those around them. For it was through their collective efforts that the heart of the church beat steadily and brightly, like a guiding light in the darkness, illuminating the path towards a more loving and united world.

Thank you for all you do,

Parish Nurse Leoma

COUNCIL UPDATES

I wrote an article for the April Lifelines that described our financial situation. I noted that we were behind on our projected giving by \$33,000 for the months of January and February. If this continued throughout the year we would be in a deficit of \$179,000 by the end of the year.

We now have the results of our giving in April. The news is great. The goal was to receive \$88,201, but we actually received \$117,201. This will help make up some of the shortfalls for the first part of the year. This is tempered a little because of Easter.

May began with a bit of a slow start, please continue your amazing response to finish May strong...and continue through the summer.

It is your willingness to stretch your giving that makes a difference to those we serve. Thank you.

Jerry Soma
Congregational Council President

MUSIC DEPARTMENT UPDATES



On Thursday, June 19, the American Guild of Organists (AGO), who are having their National Convention in Phoenix/Scottsdale, will be bringing about 50 organists to look at our Glotter Gotz organ, which was dedicated in January 2014. Concert organist Isabelle Demers, along with Don Morse, will demonstrate and talk about the sounds on our organ. We, at Lord of Life, are welcome to come and enjoy this time with the other guests of the convention. No fee or tickets are needed. **Our educated guess of the time is 2:30 - 3:30 PM. However, if the busload gets here earlier, it might start a little before 2:30 PM.**

During the summer months, Dave and Gloria take inventory of the past year and what the fall, winter, spring of 2025-2026 should look like, as far as music is concerned at Lord of Life.

We are so thankful for the many people who participate in the choirs, do small groups, solos, duets and the like. We'll continue to need those of you who are around this summer to do special music or preludes and communion music. Thank you for blessing us in a multitude of ways.

May 12 and 13, Gloria was able to be at an organ event at Pinnacle Peak Presbyterian Church and ASU, celebrating women organists through the ages. In June, Gloria will be going to the National Federation of Music Clubs and the AGO Convention. Our church has an associate membership in the NFMC enabling us to have Young Artists doing concerts here for an incredibly reasonable price.

On our wish list for fall (or earlier); guitarist for WINK worship, two more bell players, and always more choir members. If you are interested, please contact Gloria.

We hope all of you have a blessed, relaxing summer.

Gloria and Dave Lien

WEEKLY OPPORTUNITIES

MENS CARING & SHARING

Monday from 9 - 11:30 AM

LOL UNIVERSITY: THE GOSPEL OF LUKE

Monday at 2:00 PM

ZOOM AT NOON

Wednesday at 12:00 PM

EYE OPENER BIBLE STUDY

Thursday at 7:30 AM

GRIEF SUPPORT GROUP

Thursday at 1:30 PM

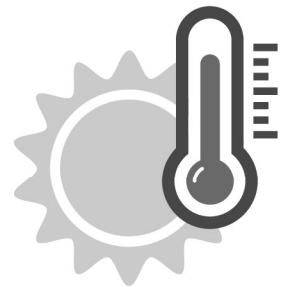
CENTERING PRAYER

Friday at 9:00 AM

MAHJONG GAME GROUP

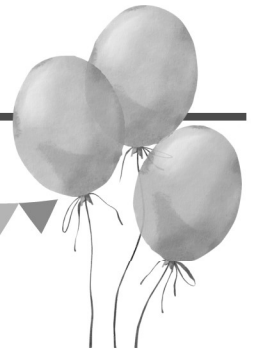
Friday at 12:15 PM

HEAT RESPITE



This summer Arizona Faith Network is offering a faith-based Heat Respite program partnering with First Church UCC, Grace Lutheran Church, and other churches in Phoenix. They are helping the homeless by providing food, shelter, water, and life-saving resources.

Lord of Life Lutheran Church will participate in this important ministry again. **We will meet on Tuesdays, Wednesdays, and Fridays at 9:00 AM on June 10, 11, 13, 24, 25, and 27.** We need volunteers to assemble the sandwiches and snacks at our church. This usually takes an hour. We also need drivers with a SUV or other large vehicle, to deliver the food to First UCC in Phoenix on those dates. Please sign up before and after worship services or call Sheila in the church office. Thank you!



June Birthdays

- | | | | |
|--|---|--|---|
| 01 Susan Novak
Carole Weber | 09 Marilyn Sackreiter
10 Sue McFadden | 18 Gary Brugh
19 Bob Carhart | 25 Mike Gunnarson
Jan Hunt |
| 02 Betty Dorsey
Kathy Hahn
Gary Retzak | 11 Arlene Dixson
Tom Roskens
Carolyn Lindhorst | Art Nelson
Butch Kjelgaard
Kathy Burke | 26 Connie Johnson
Richard Tucker |
| 03 Missy Hild
Doug Schiff
Kathy Aydelotte
Janis Harbison
George Peterson | 13 Kay Tolo
David Rossum | 20 Leasen Clark
Sharon Quern | 27 Marge Petry
Ken Klaasmeyer |
| 04 Chris MacNeil
Wally Brambilla | 14 Linda Tilton
Ron Hein
Anada Guse' | 21 Lucy Filippone
22 Lloyd Webb
Ronda Dostal
Jae Paselk
Mary Susan Cable | 28 Glenn Austad
Gen Hullstrom |
| 05 Wayne Schillinger
Rene' Kropf | 15 Bill Beghein
Shirl Piette
Merv Nelson
Viv Aarestad | 23 Jerry Peck
Carol Swanson
Ron Tellefson
Boyd McEwen | 29 David Tiede
Jim Danielsen
Karen Peterson
Rondy Voorhees |
| 06 Gene Van Hauen
Barb Stoll | 16 Ralph Plagman
17 Aloise Failing-Wrobel
Edna Bizzigotti
Ron Aron
Sally Jo Brown
Shirley Matthews | 24 Joyce Trangsrud
Shirlee Lansing
John Ereth | 30 Darlene Smith |

July Birthdays

- | | | | |
|--|---|---|--|
| 01 Dorothy Donohue | 13 Karen Austad
Don Mills
Neil Baumann | 20 Sarma Salter
Judi Lundstrom
Cheryl Hadac
Lynn Saelens
Rohry Mangan | 25 Rozell Doering
Patricia Busse
Mary Ann Cotton
Barb Collins
Lynn Berrier |
| 03 Sandi Zickau
Harry Stannebein
Pat Griffith
Judi Rodgers | 14 Werner Knuth
Dave Benson | 21 Frank Jennings
Judy Stacey
Barb Lider
Rita Boyd
Jude Llamas | 27 Diane Marx
Alice Aho
Dave Roberts
Lanny Auberg |
| 04 Jack Dunford
Dave Gigure
Dennis Wise | 15 Char Frost
Robin Weeks | 22 Dean Lewellen
Mary Lynn Hedrick
Paul Engebretson
Steve Kramer
John Sersland
Fred Ruefer | 28 Marsha Shaw
Bill Steil
Sharon Maloney |
| 06 Ruth Mohwinkel
Stan Robson | 16 Ron Terranella | | 29 Carol Beghein
Bill Shelly |
| 08 Dave Smith
Muriel Underdal
Kimberly Sterner
Greg Hoffman
Phyllis Hibben | 17 Glenda Jessen
Roger Quern | 23 Gary Wiles
Skip Rickmeyer | 30 Al Opsal
Janet Benoit
Jim Nelson
Linda Starr
Kathy Mandsager |
| 09 Marilyn Gigure
Landon Grote
Mary Sersland
Kyle Kroschel | 18 John Peterson
Rose Hedden
Blanka Schuster
Annette Bergan
Angelo Diasparra
Janell Petersen | 24 Jerome Knudson
Sandra Latvalla
Harriet Ham | 31 Bob Grieve
Darwin Langseth
Eloise Ostrem |
| 10 Sue Beckman | 19 Barb Braun
Sharon Lamb
Bonnie Foley
Dennis Russler | | |

AS OF MAY 20, 2025**MEMBERSHIP COUNT:**

Full	672
Associate	260
Total	932

IN MEMORIAM

Elizabeth Bader
Jean Block
David Geske
Roberta Morling
Pauline Mounsey
Chuck Reynolds
Dale Srigley

HOSPITALIZED/SURGERY

(since last Lifelines)

Dottie Anderson
Carol Buck
Sharon Gorden
Ron Guse'
Mary Lynn Hedrick
Janet Horst
Diane Jordan
Diane Marx
Victoria Miller
Bob Nix
Sheryl Saddoris
Ron Tellefson
Gary Tharalson
Carol Thunborg
Billie Zill

REMOVAL FROM MEMBERSHIP

Marcia Moe

NEW MEMBERS

Warren Grathwohl
Bill & Carole Beghein

Lord of Life Lutheran Church

Treasurer's Report

April 2025

	Apr Actual	Apr Plan	YTD Actual	YTD Plan
Income				
Envelope Offering	113,452	85,000	387,020	412,000
Loose Plate Offering	2,040	2,261	11,255	12,334
Other Income	3,125	2,698	27,553	21,175
Total Regular Income	118,616	89,959	425,828	445,509
Expense				
General Expenses:				
Salaries & Benefits	68,172	66,895	265,511	266,012
General Operations	7,381	5,633	26,379	25,553
Regular Ministries	3,379	8,247	13,938	24,831
Building & Grounds	6,043	5,481	20,205	27,658
Utilities	2,638	1,875	10,446	7,285
Insurance	1,650	1,865	6,577	7,456
Sub-Total General Expenses	89,262	89,996	343,056	358,795
Mission Support:				
G/C Synod Support	11,110	11,110	44,440	44,440
G/C Synod Pass-Thru	4,504	4,544	18,016	18,056
Non-Synod Direct	834	834	3,336	3,336
Sub-Total Mission Support	16,448	16,488	65,792	65,832
Total Regular Expenses	105,710	106,484	408,848	424,627
Net Operating Income - Month	12,906	-16,525		
Net Operating Income - Year-to-Date			16,980	20,882
Variance to Month Budget	29,431			
Variance to Year-to-Date Budget	-3,902			
Mission Endowment Fund Balance	1,911,576			
Online Giving	29,134	19%		

GIVING OPTIONS

It is important to remember it still takes this community to keep the church doors open and working in the world. Please remember to continue your contribution by:

- Texting LOLAZGIVE to (833) 750-9316
- Donate online at www.lolaz.org/donate
- Use Bill Pay from your bank
- Consider asking your financial planner about a qualified charitable distribution from your IRA or 401K
- Mail your contribution to us at 13724 W. Meeker Blvd., Sun City West, AZ 85375
- Drop your contribution in the mailbox next to the front door of the office!

Please note that all electronic forms of giving are protected and secured by PCI compliant methods.

We are also grateful for the directed gifts from Thrivent Choice Dollars and any other charitable groups through your financial institution.

| CALL COMMITTEE UPDATE

The Call Committee is committed to securing a new pastor for Lord of Life. We are carefully considering the input from the Listening Circles, as the congregation has expressed the qualities desired in a new pastor. After interviewing several candidates, we determined they did not meet our specified requirements. Our aim is to find a pastor who will appreciate our unique community and commit to serving with us for at least 7 to 10 years. Although there are no current candidates, Bishop Hutterer and the Synod Transition team are diligently searching for an appropriate candidate. We request that you continue to pray for us as we navigate this process.

Should you have any inquiries, please do not hesitate to reach out to a member of the call committee.

CALL COMMITTEE

Dean Lewellen

Jim Price

Jim McLinn

Leslie Young

Sandra Solomon

Christi Rich

Lynn Hunt

WORSHIP HOURS

Summer Worship
Saturday: 5:00 PM
Sunday: 9:30 AM

OFFICE HOURS

Monday - Friday
8:00 AM - 3:00 PM

PHONE: (623) 584-2000

EMAIL: INFO@LOLAZ.ORG

WEBSITE: WWW.LOLAZ.ORG

STAFF

The Rev. Jeff Hackler
pastorjeff@lolaz.org

The Rev. Pam Reynolds
pastorpam@lolaz.org

Deb Dorough
Director of Administration
deb@lolaz.org

Gloria Lien
Music Director
gloria@lolaz.org

Jess Lunceford
Communication Coordinator
jess@lolaz.org

Frank Petrella
Facility Manager
frank@lolaz.org

Vicki Repsholdt
Office Manager
vicki@lolaz.org

Karen Ellison
Admin Assistant - Finance
karen@lolaz.org

Leoma Lightner
Parish Nurse
leoma@lolaz.org

Dave Lien
Choir Director
dave@lolaz.org

Sheila Wright
Events Coordinator
sheila@lolaz.org

LORD OF LIFE LUTHERAN CHURCH
13724 W. Meeker Blvd.
Sun City West, AZ 85375-3730

TIME DATED MATERIAL JUNE & JULY

CURRENT RESIDENT/OR



ITEMS OF INTEREST

- **Worship Services on the Web.** If you are out of town or not able to attend services, visit our website and listen to the service at www.lolaz.org, or subscribe to Lord of Life on YouTube at www.youtube.com/c/LordOfLifeLutheranChurch.
- **Listening Devices.** Assisted listening devices are available as part of our sound system during worship services.
- **Holy Communion in the Pew.** If you wish to receive Holy Communion in the pew during worship, please notify one of the ushers prior to the beginning of the service. We are always happy to offer the sacrament to anyone who is unable to come forward to the altar.
- **Unisex Handicap Restrooms.** The restrooms in the Chapel are Unisex Handicap Restrooms and are available for people who need family member assistance or are in wheelchairs.
- **Wheelchairs.** Wheelchairs are available in the Narthex for those who may have difficulty walking from the parking lot to the Sanctuary for worship. The door into the Sanctuary on the east side of the building (next to the Columbarium) is handicap accessible for those in wheelchairs, walkers or who have difficulty walking.
- **Pastors on Call.** One of your pastors is on call after office hours, on weekends and on holidays for emergencies. If you need to contact a pastor during those times, call the church office answering system at (623) 584-2000 and leave a message. The on-call pastor will return your call as soon as they are able.
- **Hospitalizations.** If you are in the hospital and want us to be aware of it, please call the church office or have someone call on your behalf. Unless directed otherwise, your name will be placed on the prayer chain and included in electronic notifications. You can also request to add your name or those you care about to the prayer list for any reason, for up to two weeks.
- **Council Minutes and Financial Statements.** These documents are available for your perusal in the church office or on our Member's Only website.
- **Lost & Found.** Check the Narthex counter or come to the church office to claim lost items.
- **Text LOLAZGIVE** to (833) 750-3196 to give today!

NON-PROFIT ORG.
U.S. POSTAGE PAID
SUN CITY, AZ
PERMIT NO. 17